

# FLIFT

AMERICA

# GAMBIT

## 4WD

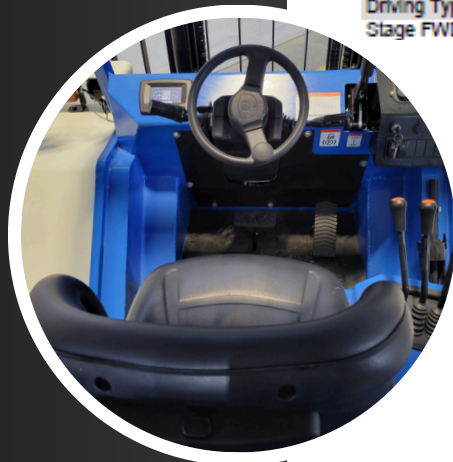
Well Equipped @ \$61881





Model		GAMBIT 4WD 6600D	GAMBIT 4WD 7700D
Power Type		Diesel	Diesel
Rated Capacity	lbs	6600	7700
Load Center	In	20	20
Service weight	lbs	12540	12980
Tire Type (Front/Rear)		Tubeless tires	Tubeless tires
Wheel number X = drive wheel (Front/Rear)		2X/2X	2X/2X
Tire Size (Front)		405/70-20-14PR	405/70-20-14PR
Tire Size (Rear)		10.0/75-15.3-12PR	10.0/75-15.3-12PR
Wheelbase	In	75	75
Fork Size (Lx WxT)	In	48x5x2	48x5x2
Mast Tilt Angle (F/R)	deg	10/12	10/12
Lift Height (M300)	In	118	118
Mast Lowered Height (M300)	In	88	90
Free Lift Height (M300)	In	5	4
Mast Extended Height (M300)	In	168	168
Length to Face of Fork	In	128	129
Overall Width	In	72	72
Overhead Guard Height	In	89	89
Front Overhang	In	27	28
Rear Overhang	In	24	24
Turning Radius (outside)	In	172	172
Ground Clearance (Bottom of mast)	In	10	10
Min. intersecting aisle	In	120	120
Min. right angle stacking aisle width	In	250	250
Max. Travel Speed (Full load/No load)	mph	15/16	15/16
Lifting Speed (Full load/No load)	In/s	19/20	19/20
Lowering Speed (Full load/No load)	In/s	15/16	15/16
Max. Gradeability (Full load)	%	30	30
Engine Model		CUMMINS Q8F2.8T4C86	CUMMINS Q8F2.8T4C86
Rated output/r.p.m	hp/rpm	66/2500	66/2500
Rated torque/r.p.m	ft. lbs	170/1600	170/1600
No. of Cylinder		4	4
Bore x Stroke	mm	94*100	94*100
Displacement	L	2.8	2.8
Emission Standards		EPA Tier 4	EPA Tier 4
Fuel Tank Capacity	gal	21	21
Battery (Voltage/Capacity)	V/Ah	12/120	12/120
Transmission Type		Hydraulic	Hydraulic
Driving Type		2WD/4WD	2WD/4WD
Stage FWD/RVS		F3/R2	F3/R2

**DEALER CONTACT**



**WHY FLIFT?**

- 200+ DIESEL MODEL CONFIGURATIONS
- CUMMINS POWERED
- STANDARD SIDE SHIFT
- SELECTABLE CAPACITY
- SELECTABLE COLOR(S)
- SELECTABLE MAST
- SELECTABLE FORK SIZE
- SELECTABLE PNEUMATIC OR SOLID TIRES
- OPTIONAL CAB W/ HEAT & AIR
- OPTIONAL TILT CAB
- OPTIONAL FORK POSITIONER
- INDUSTRY BEST (STD) WARRANTY

