

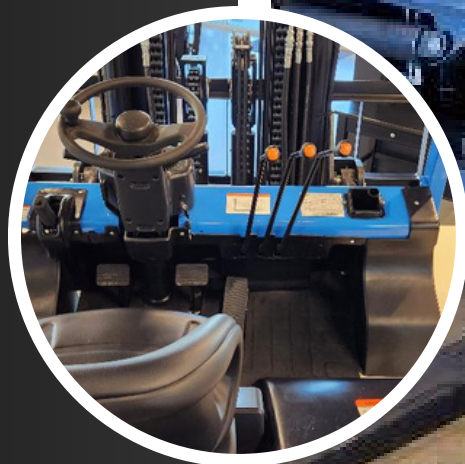
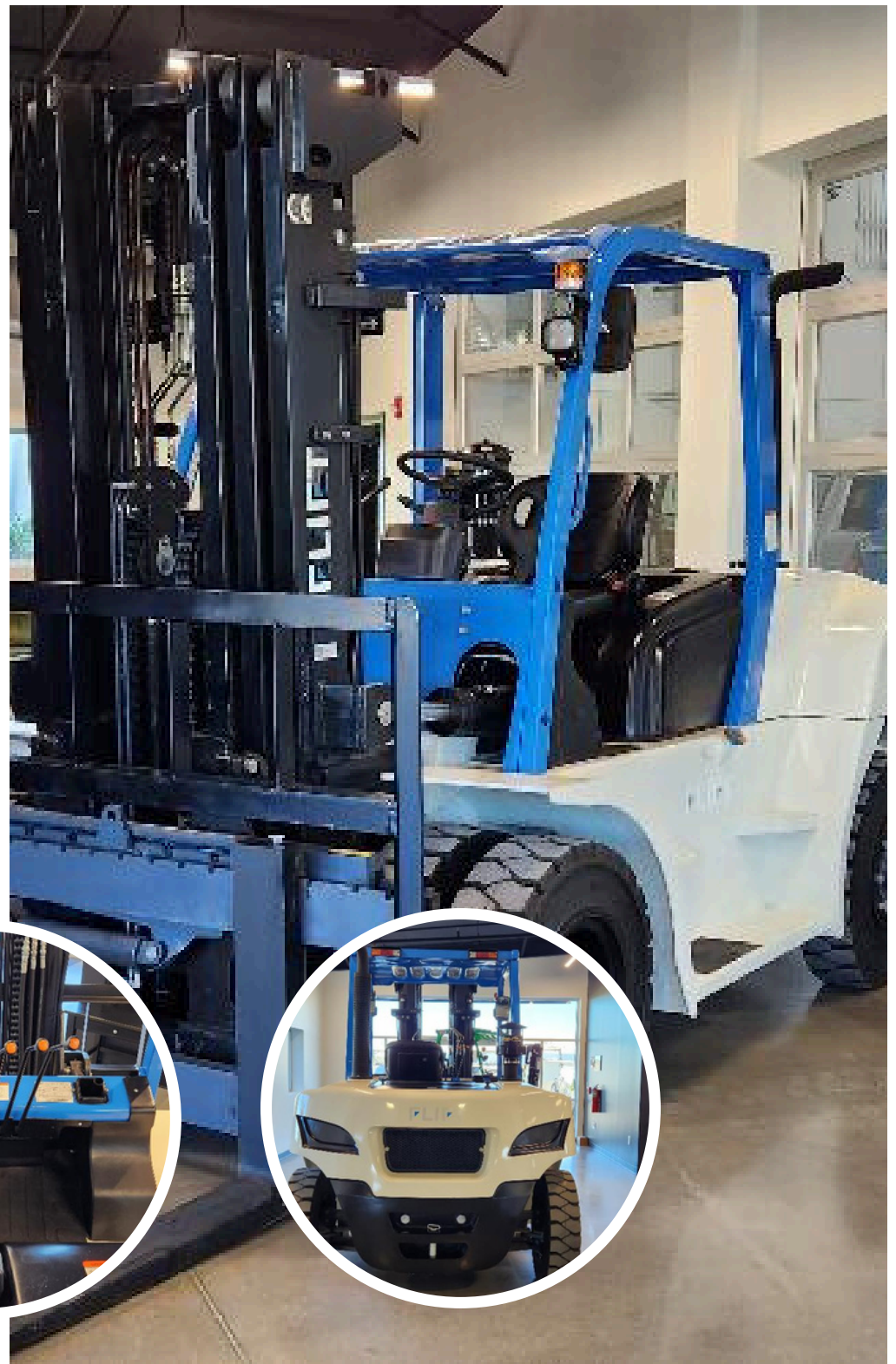
FLIFT

AMERICA

GAMBIT

11K-17K DIESEL

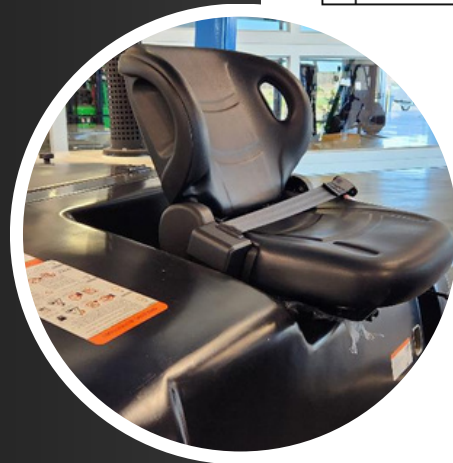
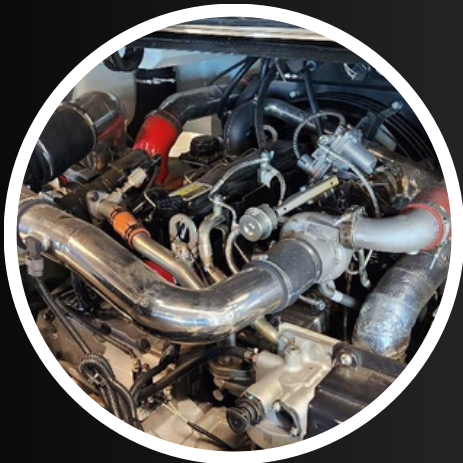
Well Equipped Starting @ \$69375





DEALER CONTACT

Model		11000	13000	15000	17000			
General	Power Type		Diesel	Diesel	Diesel	Diesel		
	Rated Capacity	lbs	11000	13000	15000	17000		
	Load Center	In	24	24	24	24		
Characteristic & Dimension	Lift Height	In	177	177	197	197		
	Fork Size	LxWxT	In	48"6"2	48"6"2	48"6"3	48"6"3	
	Mast Tilt Angle	F/R	Deg	6°/12°	6°/12°	6°/12°	6°/12°	
	Front Overhang (Wheel Center to fork face)		In	23	23	23	23	
	Ground Clearance (Bottom of mast)		In	8	8	8	8	
	Overall Dimension	Length to face of fork (Without fork)		In	136	136	140	140
		Overall Width		In	79	79	79	79
		Mast Lowered Height		In	98	98	98	98
		Mast Extended Height (With backrest)		In	174	174	174	174
	Overall Guard Height		In	97	97	97	97	
Turning Radius (outside)		In	128	128	132	132		
Min. Insecting aisle		In	116	116	120	120		
Performance	Speed	Travel (Empty load)	mph	19	19	19	19	
		Lifting (Full load)	In/s	20	20	18	16	
	Max. Gradeability		%	20	20	20	20	
Chassis	Tire	Front		8.25-15-14PR	8.25-15-14PR	8.25-15-14PR	8.25-15-14PR	
		Rear		8.25-15-14PR	8.25-15-14PR	8.25-15-14PR	8.25-15-14PR	
	Wheel Base		In	88	88	88	88	
Service Weight		lbs	17968	19290	21495	22818		
Power & Transmission	Battery	Voltage/Capacity	V/Ah	(12V/80Ah)*2	(12V/80Ah)*2	(12V/80Ah)*2	(12V/80Ah)*2	
	Engine	Model		QSF3.8-C74T4 EPA T4F	QSF3.8-C74T4 EPA T4F	QSF3.8-C74T4 EPA T4F	QSF3.8-C74T4 EPA T4F	
		Manufacture		CUMMINS	CUMMINS	CUMMINS	CUMMINS	
		Rated output/r.p.m.	hp	74/3352	74/3352	74/3352	74/3352	
		Rated torque/r.p.m.	N·m	400/1300	400/1300	400/1300	400/1300	
		No. of Cylinder		4	4	4	4	
		BorexStroke	In	4"4	4"4	4"4	4"4	
		Displacement	L	3.6	3.8	3.8	3.8	
	Fuel Tank Capacity	gal	37	37	37	37		
	Transmission	Type			Hydraulic	Hydraulic	Hydraulic	Hydraulic
Stage		FWD/RVS		2/2	2/2	2/2	2/2	
Operating Pressure for Attachment		Mpa	19	19	19	19		



WHY FLIFT?

- 200+ DIESEL MODEL CONFIGURATIONS
- STANDARD SIDE SHIFT
- SELECTABLE POWERTRAIN
- SELECTABLE CAPACITY
- SELECTABLE COLOR(S)
- SELECTABLE MAST
- SELECTABLE FORK SIZE
- SELECTABLE PNEUMATIC OR SOLID TIRES
- OPTIONAL CAB W/ HEAT & AIR
- OPTIONAL DUAL WHEEL
- OPTIONAL FORK POSITIONER
- INDUSTRY BEST (STD) WARRANTY

