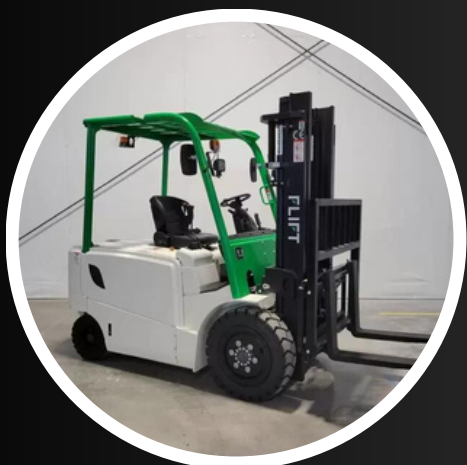


# FLIFT

AMERICA

# GAMBIT ELECTRIC

Well Equipped @ \$26947



[www.FLIFTAmerica.com](http://www.FLIFTAmerica.com)



**DEALER CONTACT**

| Model                             |  | 3300E                                 | 4400E        | 5500E        | 6600E        | 7700E        |              |
|-----------------------------------|--|---------------------------------------|--------------|--------------|--------------|--------------|--------------|
| General                           | Power Type                                 | Electric                              | Electric     | Electric     | Electric     | Electric     |              |
|                                   | Rated Capacity                             | lbs 3300                              | 4400         | 5500         | 6600         | 7700         |              |
|                                   | Load Center                                | in 20                                 | 20           | 20           | 20           | 20           |              |
|                                   | Lift Height (M300)                         | in 118                                | 118          | 118          | 118          | 118          |              |
| Fork Size                         | L*W*T                                      | in 36x4.75x1.4                        | 42x4.75x1.5  | 42x4.75x1.5  | 42x5x1.75    | 42x5x1.75    |              |
| Mast Tilt Angle                   | F/R  | Deg 6°/12°                            | 6°/12°       | 6°/12°       | 6°/12°       | 6°/12°       |              |
| Characteristic & Dimension        | Front Overhang (Wheel Center to fork face) | in 17                                 | 18           | 18           | 19           | 19           |              |
|                                   | Tread                                      | F/R                                   | in 35/36     | 38/37        | 38/37        | 39/38        | 39/38        |
|                                   | Ground Clearance (Bottom of mast)          | in 4.5                                | 4.5          | 4.5          | 5            | 5            |              |
|                                   | Overall Dimension                          | Length to face of fork (Without fork) | in 85        | 93           | 93           | 101          | 101          |
|                                   |  | Overall Width                         | in 43        | 45           | 45           | 48           | 48           |
|                                   |  | Mast Lowered Height                   | in 79        | 82           | 82           | 83           | 83           |
|                                   |  | Mast Extended Height (With backrest)  | in 155       | 158          | 158          | 164          | 164          |
|                                   | Overall Guard Height                       | in 85                                 | 88           | 88           | 86           | 86           |              |
|                                   | Turning Radius (Outside)                   | in 77                                 | 82           | 82           | 91           | 91           |              |
|                                   | Performance                                | Min. inspecting aisle                 | in 81        | 89           | 89           | 95           | 95           |
| Speed                             |  | Travel (Empty load)                   | mph 10       | 10           | 10           | 10           | 10           |
|                                   |  | Lifting (Full load)                   | in/s 11      | 12           | 12           | 12           | 12           |
| Max. Gradeability                 |  | % 15                                  | 15           | 15           | 15           | 15           |              |
| Chassis                           | Tire                                       | Front                                 | 6.50-10-10PR | 7.00-12-12PR | 7.00-12-12PR | 28*9-15-12PR | 28*9-15-12PR |
|                                   |  | Rear                                  | 5.00-8-10PR  | 18*7-8-14PR  | 18*7-8-14PR  | 18*7-8-14PR  | 18*7-8       |
|                                   | Wheel Base                                 | in 54                                 | 59           | 59           | 67           | 67           |              |
| Service Weight                    | lbs 6768                                   | 9193                                  | 9722         | 11243        | 11684        |              |              |
| Power & Transmission              | Motor                                      | Drive Motor                           | in 10.7      | 14.75        | 14.75        | 20           | 20           |
|                                   |  | Lift Motor                            | in 11.5      | 11.5         | 11.5         | 16           | 16           |
|                                   | Battery                                    | Voltage/Capacity                      | V/Ah 48/440  | 48/560       | 48/630       | 80/500       | 80/550       |
|                                   |  | Manufacturer                          | INMOTION     | INMOTION     | INMOTION     | INMOTION     | INMOTION     |
|                                   | Controller                                 | Type                                  | AC           | AC           | AC           | AC           | AC           |
| Operating Pressure for Attachment | Mpa 14.5                                   | 17.5                                  | 17.5         | 17.5         | 17.5         |              |              |



**WHY FLIFT?**  
 200+ ELECTRIC MODEL CONFIGURATIONS  
 UP TO 4HR WORKING TIME  
 ZERO EMISSIONS  
 STANDARD SIDE SHIFT  
 SELECTABLE CAPACITY  
 SELECTABLE COLOR(S)  
 SELECTABLE MAST  
 SELECTABLE FORK SIZE  
 SELECTABLE PNEUMATIC OR SOLID TIRES  
 OPTIONAL DUAL WHEEL  
 OPTIONAL FORK POSITIONER  
 INDUSTRY BEST (STD) WARRANTY